

NAWS at 30: Employment and Earnings

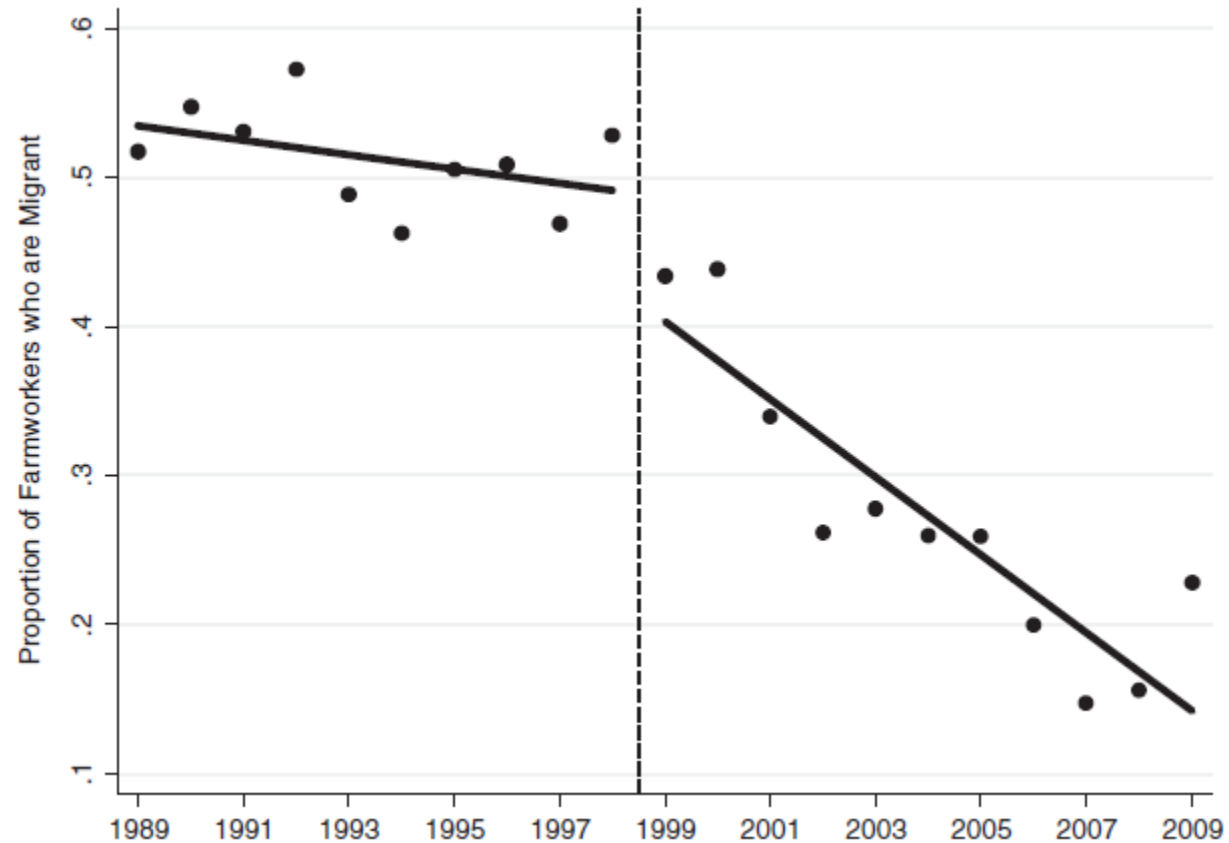
Dr. Anita Alves Pena

Department of Economics and Regional Economic Development Institute

Colorado State University

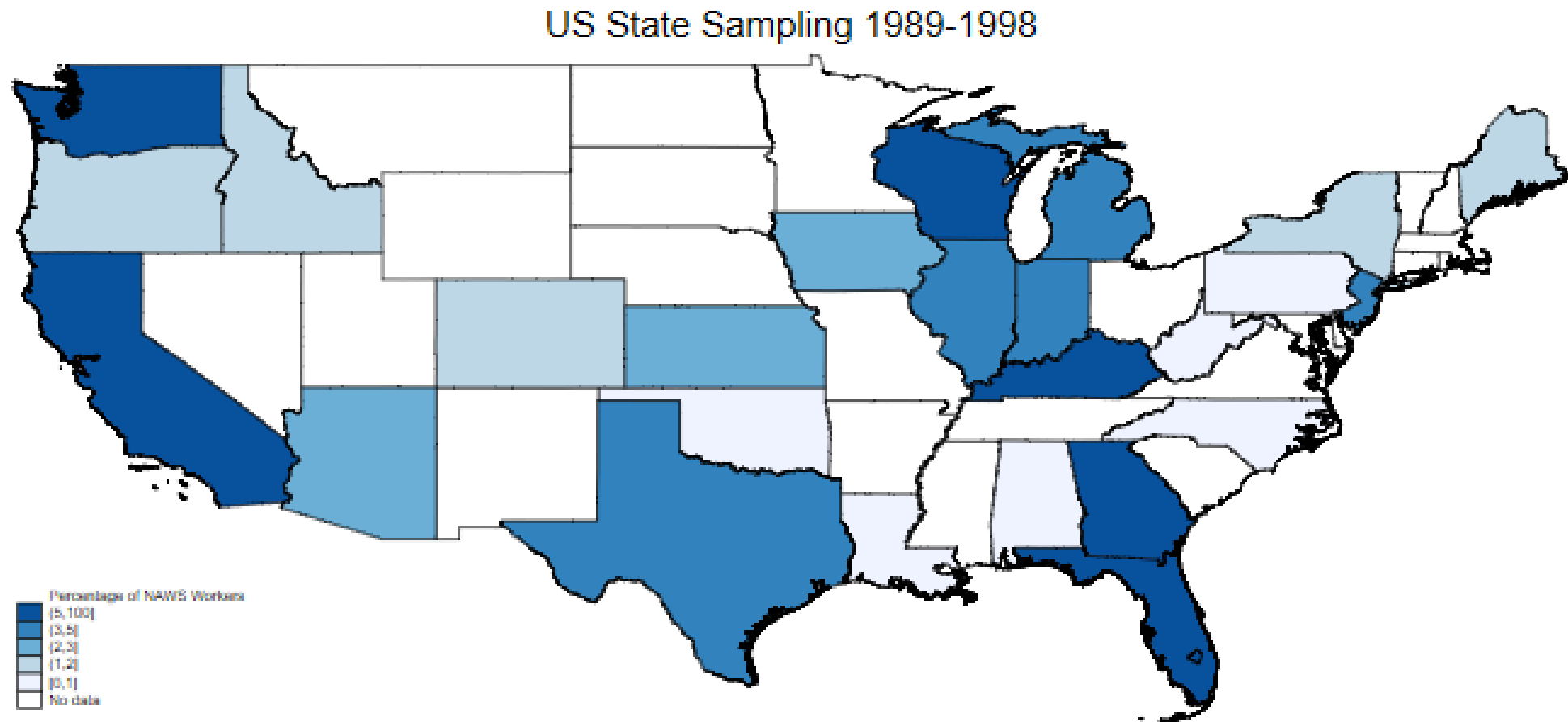


Changing Geography of NAWS

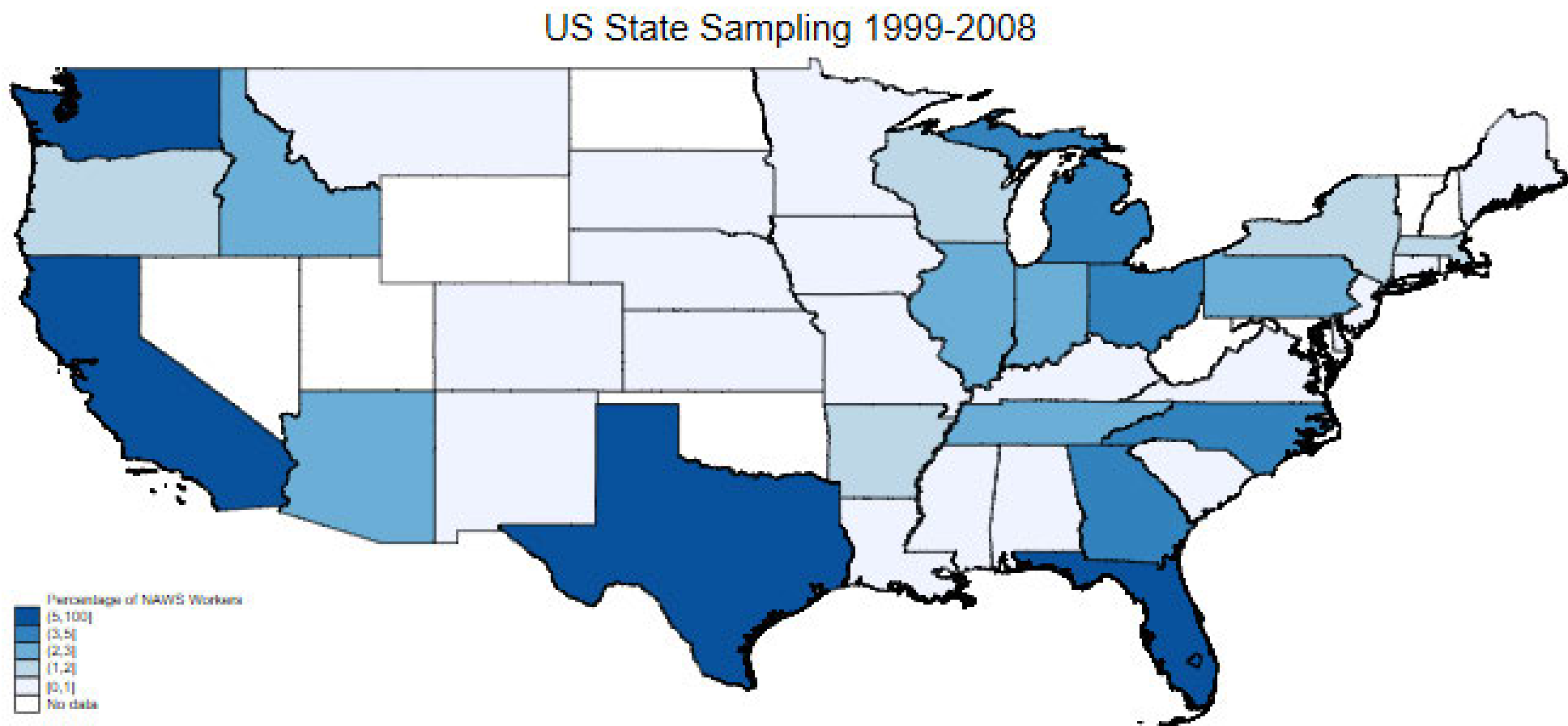


Source: Fan, Gabbard, Pena, and Perloff (2015), reproduction of Figure 1 in that publication.

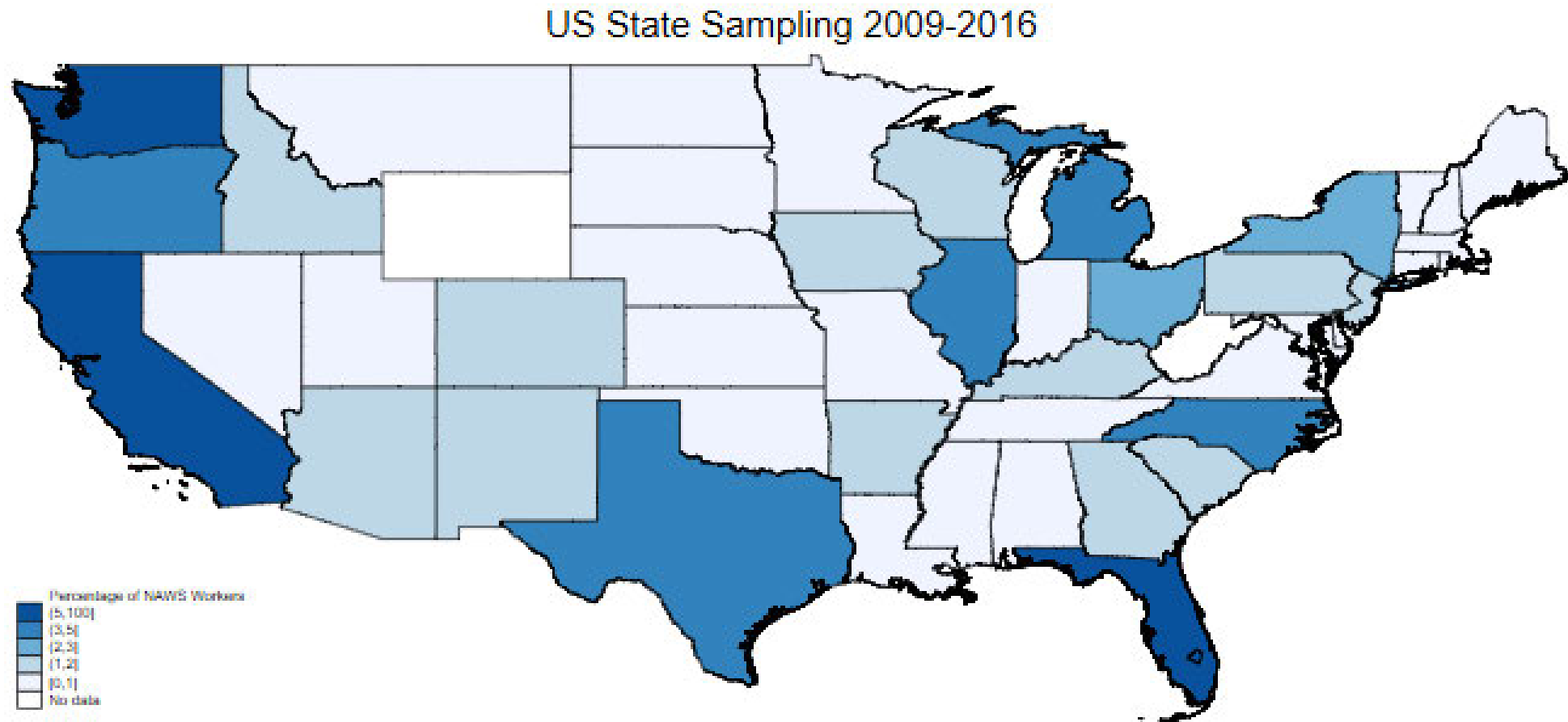
Changing Geography of Respondents (1)



Changing Geography of Respondents (2)



Changing Geography of Respondents (3)



Fraction of Workers by Region/Time

	1989-1998	1999-2008	2009-2016
California			
California (CA)	0.263	0.349	0.357
Southwest			
Mountain 3 (MN3)	0.021	0.0225	0.0264
Southern Plains (SP)	0.0498	0.0575	0.0459
Northwest			
Pacific Coast (PC)	0.0811	0.0852	0.119
Mountain 1 and 2 (MN12)	0.0327	0.0358	0.039
Midwest			
Corn Belt and Northern Plains (CBNP)	0.121	0.12	0.112
Lake (LK)	0.0961	0.0548	0.049
East			
Appalachia 1 and 2 (AP12)	0.103	0.076	0.0652
Northeast 1 (NE1)	0.0264	0.0332	0.0297
Northeast 2 (NE2)	0.0509	0.039	0.0369
Southeast			
Delta and Southeast (DLSE)	0.0845	0.0673	0.065
Florida (FL)	0.0712	0.0589	0.0548
Observations	22,520	27,740	16,293

Selected Worker Characteristics by Region

	(1)	(2)	(3)	(4)	(5)	(6)	(7)
VARIABLES	CA	Southwest	MN3	SP	Northwest	PC	MN12
WAGE, TASK 1	7.765 (0.226)	6.960 (0.236)	7.213 (0.310)	6.847 (0.309)	8.330 (0.299)	8.637 (0.372)	7.561 (0.388)
Hours	43.08 (0.533)	42.40 (1.343)	44.84 (0.865)	41.31 (1.856)	43.55 (0.804)	42.37 (0.828)	46.52 (1.689)
Female	0.227 (0.0149)	0.208 (0.0181)	0.207 (0.0266)	0.209 (0.0233)	0.273 (0.0217)	0.256 (0.0248)	0.315 (0.0413)
Age (years)	34.34 (0.353)	37.52 (0.508)	39.60 (0.968)	36.60 (0.583)	33.86 (0.459)	33.75 (0.587)	34.13 (0.659)
Education (years)	6.542 (0.0691)	7.405 (0.178)	7.068 (0.238)	7.555 (0.238)	7.695 (0.215)	7.157 (0.169)	9.042 (0.528)
Farm Experience (years)	11.55 (0.311)	13.16 (0.600)	14.67 (0.954)	12.48 (0.766)	10.93 (0.390)	11.08 (0.506)	10.57 (0.494)
Observations	21,865	4,930	2,094	2,836	8,135	5,879	2,256

Standard errors in parentheses

Source: NAWS and author calculations.

Selected Worker Characteristics by Region (Cont.)

	(9)	(10)	(11)	(12)	(13)	(14)	(15)	(16)	(17)	(18)
VARIABLES	Midwest	CBNP	LK	East	AP12	NE1	NE2	Southeast	DLSE	FL
WAGE, TASK 1	7.506	7.805	7.007	7.241	6.897	7.684	7.628	7.045	7.005	7.091
	(0.287)	(0.345)	(0.458)	(0.326)	(0.462)	(0.494)	(0.527)	(0.249)	(0.389)	(0.287)
Hours	39.94	40.81	38.47	41.88	40.73	41.75	44.25	40.37	40.86	39.81
	(0.833)	(1.168)	(1.078)	(1.196)	(1.890)	(1.521)	(1.394)	(1.004)	(1.792)	(0.814)
Female	0.291	0.263	0.338	0.189	0.179	0.283	0.145	0.234	0.177	0.299
	(0.0202)	(0.0201)	(0.0363)	(0.0201)	(0.0244)	(0.0472)	(0.0309)	(0.0152)	(0.0180)	(0.0233)
Age (years)	32.53	32.75	32.16	32.85	32.58	33.25	33.11	33.68	33.68	33.68
	(0.661)	(0.904)	(0.926)	(0.759)	(1.271)	(0.861)	(0.782)	(0.767)	(1.397)	(0.401)
Education (years)	9.469	9.586	9.275	8.145	8.197	8.867	7.555	7.175	8.017	6.218
	(0.257)	(0.354)	(0.351)	(0.182)	(0.259)	(0.335)	(0.258)	(0.176)	(0.402)	(0.135)
Farm Experience (years)	9.223	9.125	9.387	9.056	9.028	8.719	9.342	10.37	11.18	9.438
	(0.461)	(0.624)	(0.650)	(0.585)	(1.014)	(0.557)	(0.617)	(0.694)	(1.389)	(0.326)
Observations	7,594	4,583	3,011	8,025	3,713	1,710	2,602	10,134	3,641	6,493

Standard errors in parentheses

Source: NAWS and author calculations.

Emerging Issue: Changing Geography (and Other Characteristics) of Respondents

- ***Recommendation: Expand the survey to be representative at the state level***
 - ***even if this could only be available in the confidential version***

Other Emerging Issues and Recommendations

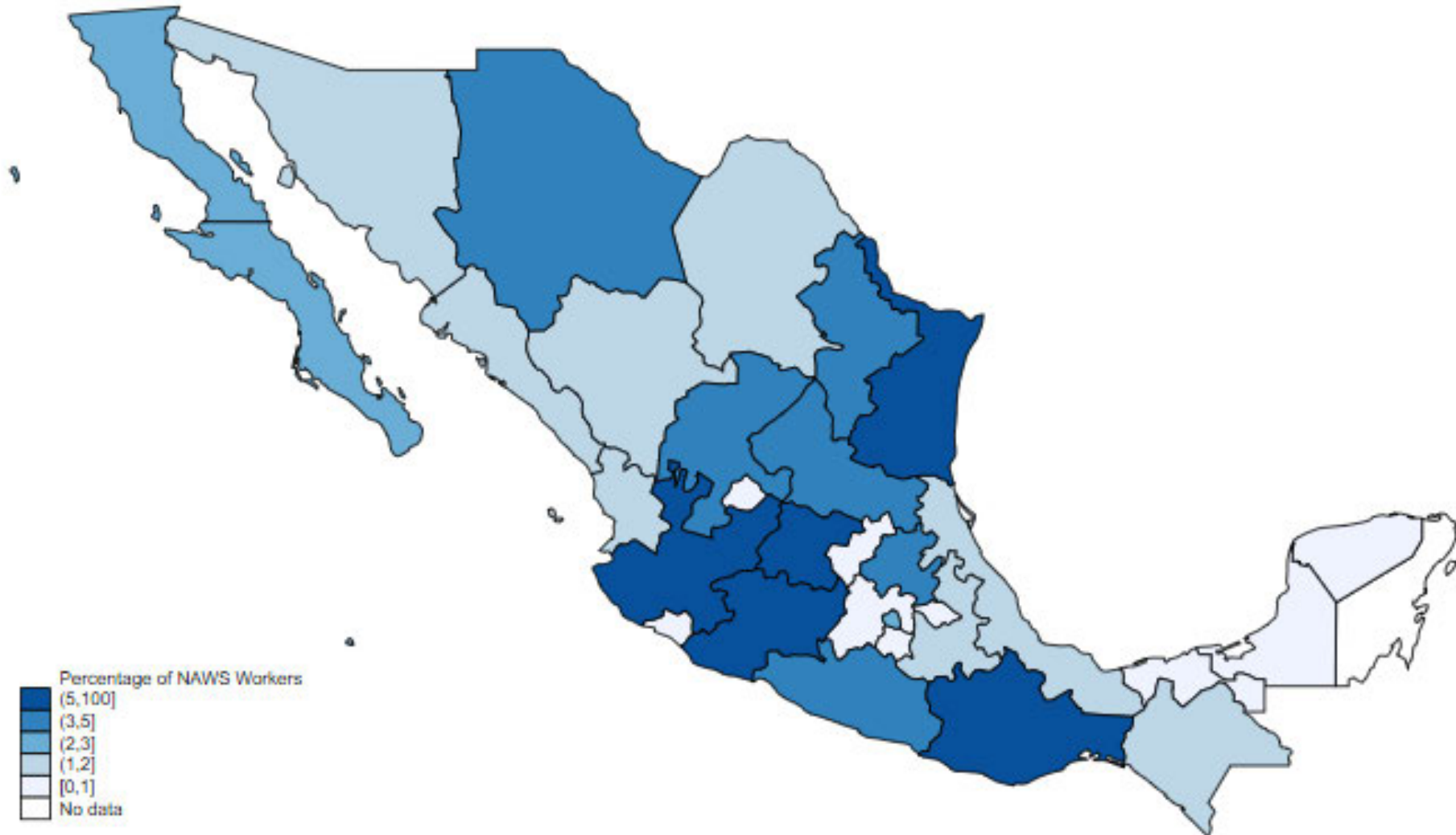
Emerging Issue: Changes in Origins and Implications

“B16 [IF FOREIGN BORN:] When you lived in your country (outside the U.S.A.), did you work in..?)”

	1989-1998	1999-2008	2009-2016
Agriculture	0.595	0.614	0.514
Observations	15,696	22,179	12,829

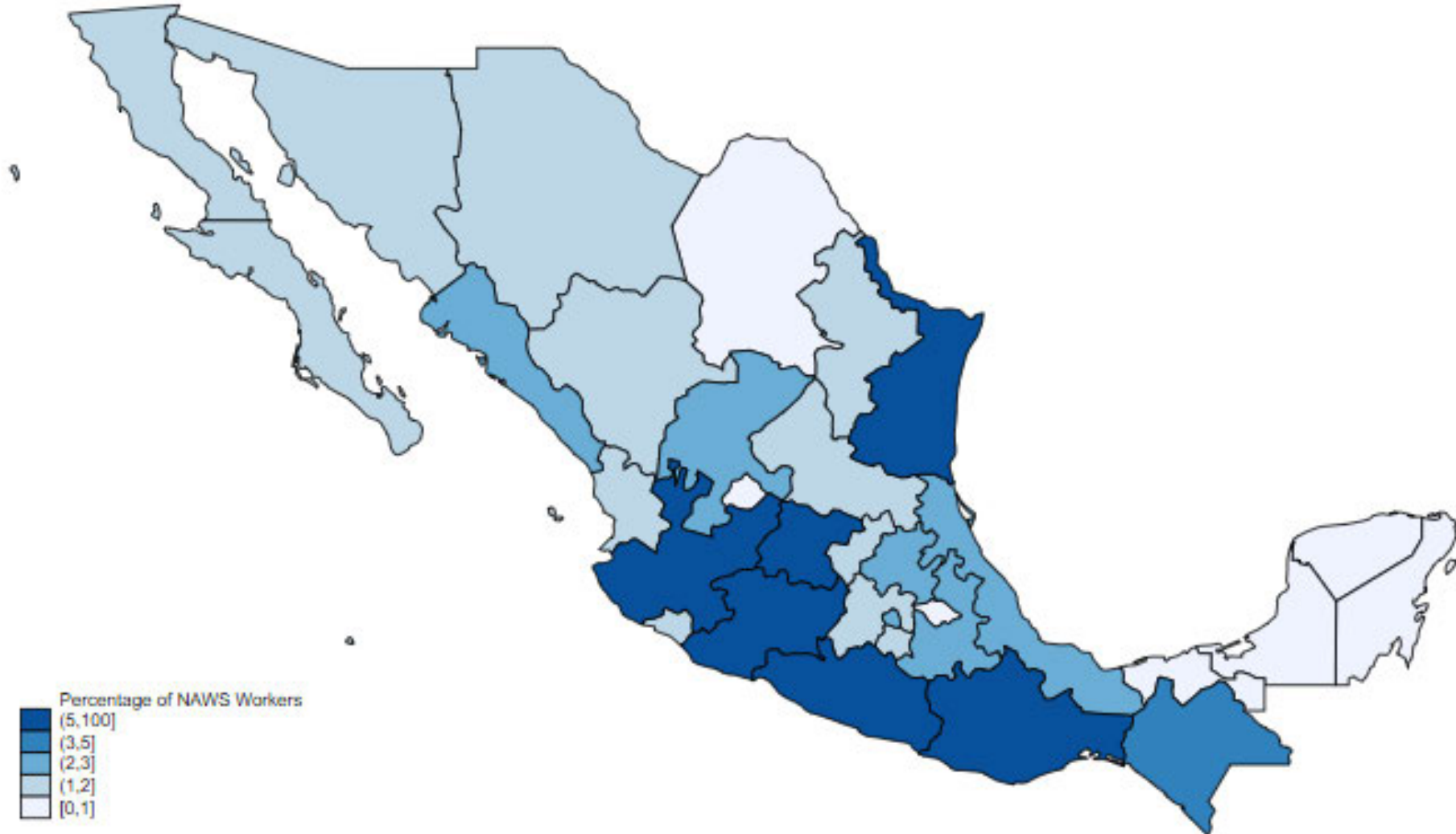
Changing Origins (1)

Mexican Origins 1989-1998



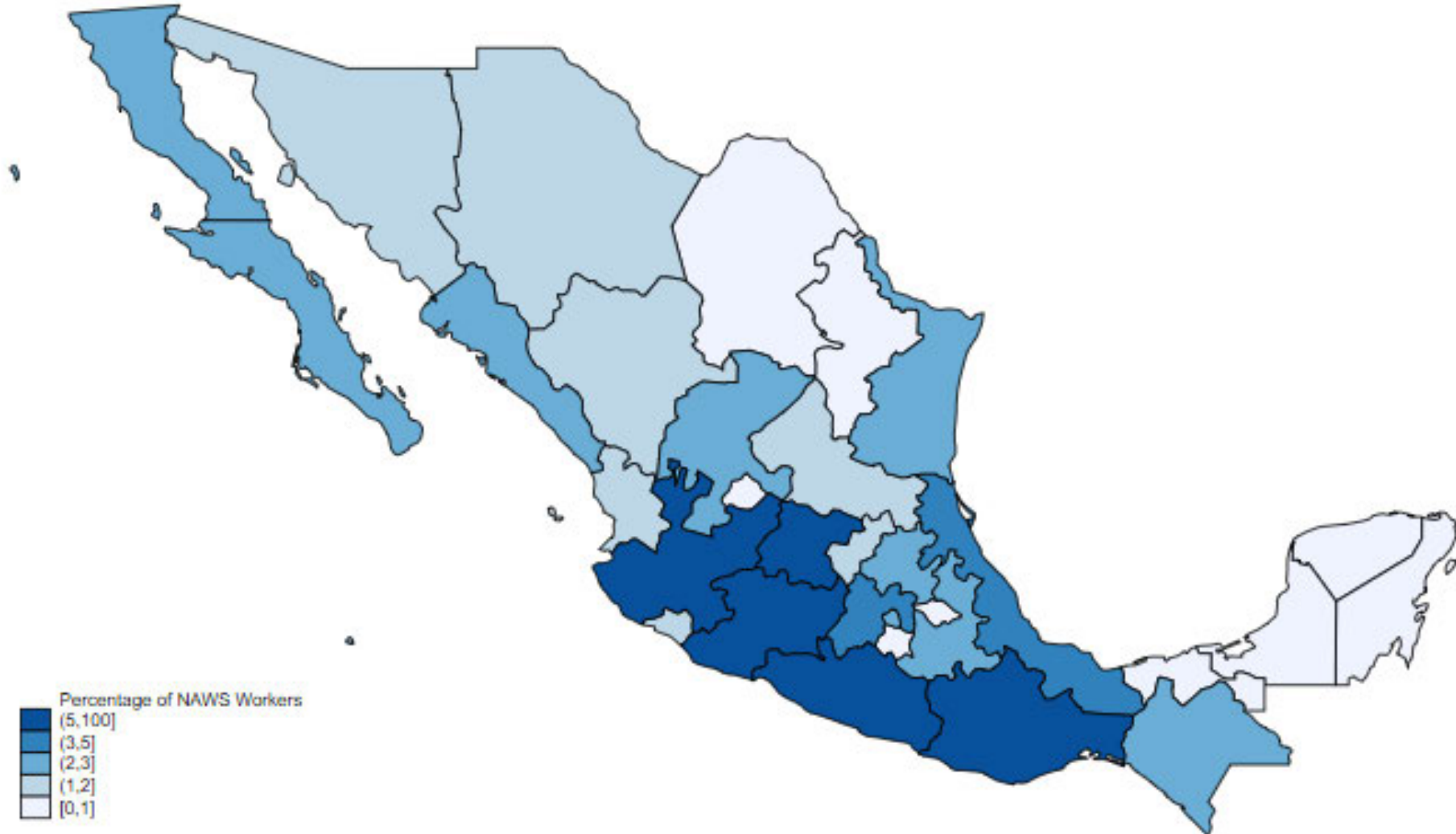
Changing Origins (2)

Mexican Origins 1999-2008



Changing Origins (3)

Mexican Origins 2009-2016



Emerging Issue: Changing Origins

- ***Recommendation: Add a question on rural versus urban origin.***
- ***Recommendation: Add a module on border crossing experience.***

Emerging Issues: H-2A Workers

	1989-1998	1999-2008	2009-2016
NEWCOMER BASED ON 12 MTHS DEFINITION	0.12	0.164	0.0273
Observations	22,473	27,726	16,263

Recommendation: Create a nationally and regionally representative sample of H-2A workers.

Other Issues and Recommendations

- ***Emerging Issue: Employer Dynamics***
 - ***Recommendation: Conduct a matched employer survey and also record surveyor observational notes.***
- ***Emerging Issue: Mental Health***
 - ***Recommendation: Reinstate the Mental Health module.***
- ***Emerging Issue: Food***
 - ***Recommendation: Add questions on where, when, and what workers eat.***
- ***Emerging Issue: Remittances***
 - ***Recommendation: Add a module on remittances for foreign-born workers.***